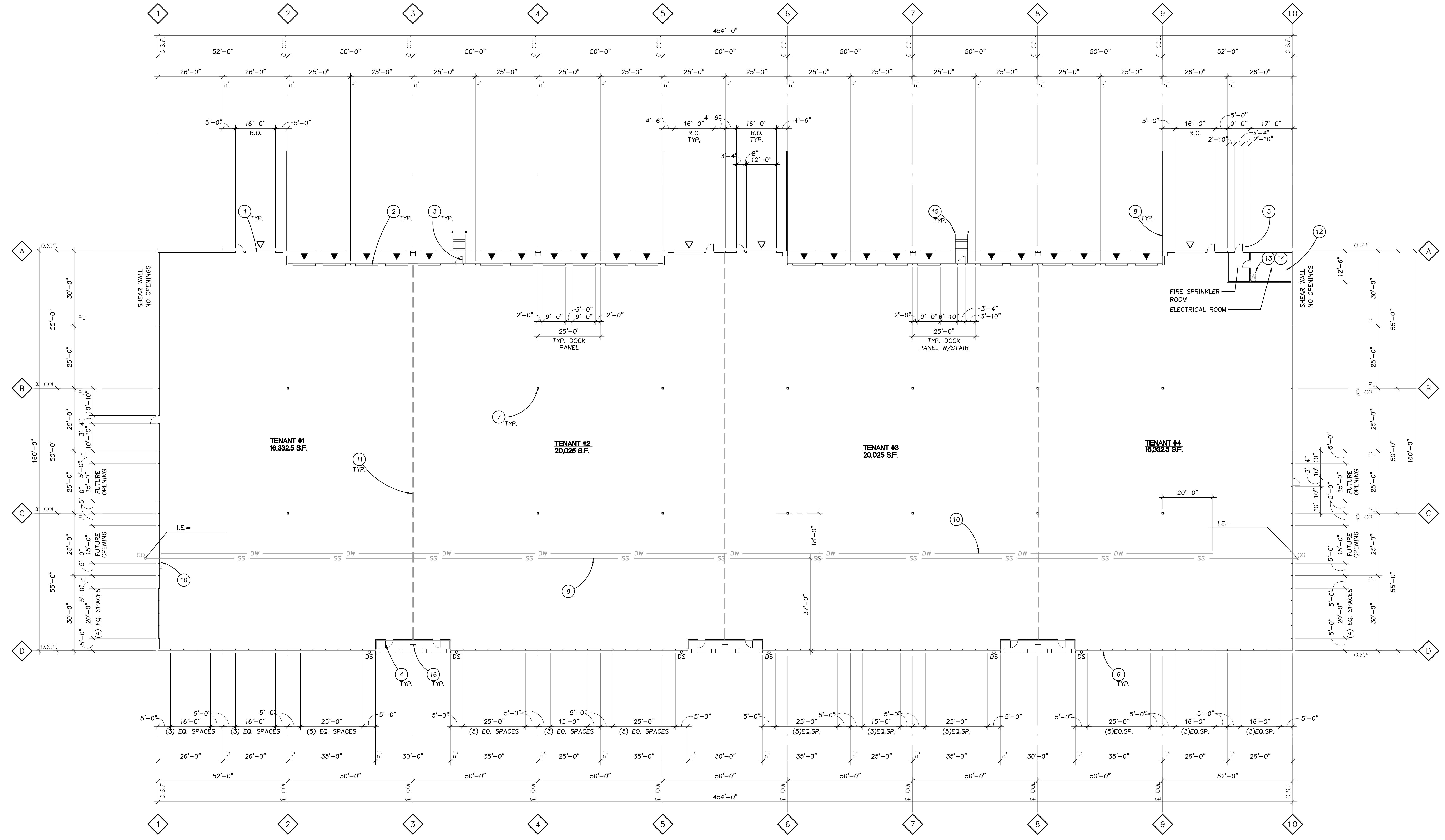


REVISIONS:

NO.	DATE	REVISION	BY	CHKD.	DELTA



1 FLOOR PLAN
 E-A21 1/16"=1'-0"

72,665 SQ. FT. TOTAL BUILDING AREA - GROSS SQUARE FOOTAGE
 24'-0" CLEAR HEIGHT MINIMUM TO STRUCTURE
 FULLY SPRINKLERED

NOTE: PROVIDE 24'-0" CLEAR MINIMUM TO ALL STRUCTURAL MEMBERS, ELECTRICAL FIXTURES, MECHANICAL UNITS, AND FIRE SPRINKLER LINES. SEE BUILDING SECTIONS.

KEYNOTES

- 12'-0"x 14'-0" INSULATED HIGH-LIFT O.H. DRIVE-IN DOOR WITH 3'-0"x 7'-0" PERSONNEL DOOR.
- 9'-0"x 10'-0" O.H. INSULATED HIGH LIFT DOCK DOOR.
- 3'-0"x 7'-0" HM PERSONNEL DOOR.
- STOREFRONT ENTRY SYSTEM WITH SOFFIT ABOVE AND 3'-0"x 7'-0" STOREFRONT DOOR.
- 3'-0"x 8'-0" HM PERSONNEL DOOR AT ELECTRICAL ROOM.
- STOREFRONT WINDOW SYSTEM.
- HSS COLUMN, SEE STRUCTURAL.
- CONCRETE RETAINING WALL, SEE DETAILS.
- 6" SANITARY SEWER LINE, SEE CIVIL FOR CONTINUATION.
- 2" INSULATED DOMESTIC WATERLINE ABOVE, ALIGN ABOVE SANITARY SEWER.
- FUTURE TENANT DEMISING WALL, ALIGN W/ HSS COLUMNS.
- ELECTRICAL ROOM. SEE DETAIL XXX.
- ROOF ACCESS LADDER, SEE DETAIL XXX.
- ROOF HATCH ABOVE, SEE DETAIL XXX.
- BOLLARD, SEE DETAIL XXX.
- BIKE RACK SEE DETAIL XXX.

LEGEND

- | | |
|--------|----------------------|
| ○ | KEYNOTE |
| — | GRIDLINE |
| □ | PANEL JOINT |
| ⊕ | CENTERLINE OF COLUMN |
| ○ S.F. | OUTSIDE FACE |
| ▼ | DOCK-HIGH O.H. DOOR |
| ▽ | DRIVE-IN O.H. DOOR |
| ○ DS | DOWN SPOUT |

GENERAL NOTES

- VERIFY AND CONFIRM ALL DIMENSIONS AND CONDITIONS. NOTIFY ARCHITECT OF ANY DISCREPANCIES PRIOR TO THE START OF CONSTRUCTION.
- SEE STRUCTURAL PANEL ELEVATIONS FOR PANEL THICKNESS.
- SEE STRUCTURAL DRAWINGS FOR FRAMING INFORMATION.
- SEE SITE PLAN FOR TRUCK APRON LOCATION AND DIMENSIONS.
- OPENING DIMENSIONS ARE ROUGH OPENING DIMENSIONS U.O.N.