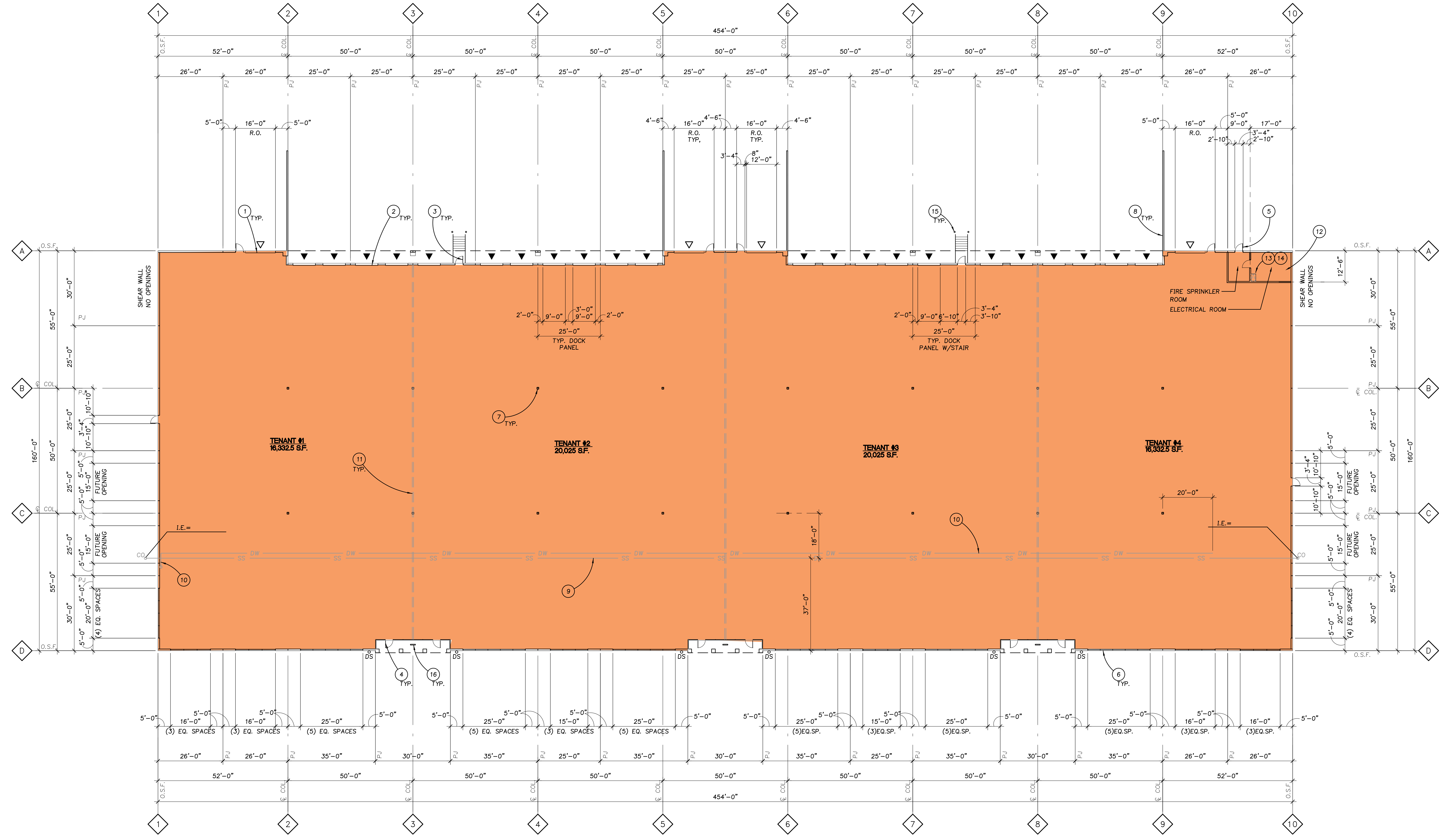


REVISIONS:

NO.	REVISION	DATE



**1 FLOOR PLAN**  
 E-A21 1/16"=1'-0"

72,665 SQ. FT. TOTAL BUILDING AREA - GROSS SQUARE FOOTAGE  
 24'-0" CLEAR HEIGHT MINIMUM TO STRUCTURE  
 FULLY SPRINKLERED

NOTE: PROVIDE 24'-0" CLEAR MINIMUM TO ALL STRUCTURAL MEMBERS, ELECTRICAL FIXTURES, MECHANICAL UNITS, AND FIRE SPRINKLER LINES. SEE BUILDING SECTIONS.

**KEYNOTES**

- 12'-0"x 14'-0" INSULATED HIGH-LIFT O.H. DRIVE-IN DOOR WITH 3'-0"x 7'-0" PERSONNEL DOOR.
- 9'-0"x 10'-0" O.H. INSULATED HIGH LIFT DOCK DOOR.
- 3'-0"x 7'-0" HM PERSONNEL DOOR.
- STOREFRONT ENTRY SYSTEM WITH SOFFIT ABOVE AND 3'-0"x 7'-0" STOREFRONT DOOR.
- 3'-0"x 8'-0" HM PERSONNEL DOOR AT ELECTRICAL ROOM.
- STOREFRONT WINDOW SYSTEM.
- HSS COLUMN, SEE STRUCTURAL.
- CONCRETE RETAINING WALL, SEE DETAILS.
- 6" SANITARY SEWER LINE, SEE CIVIL FOR CONTINUATION.
- 2" INSULATED DOMESTIC WATERLINE ABOVE, ALIGN ABOVE SANITARY SEWER.
- FUTURE TENANT DEMISING WALL, ALIGN W/ HSS COLUMNS.
- ELECTRICAL ROOM. SEE DETAIL XXX.
- ROOF ACCESS LADDER, SEE DETAIL XXX.
- ROOF HATCH ABOVE, SEE DETAIL XXX.
- BOLLARD, SEE DETAIL XXX.
- BIKE RACK SEE DETAIL XXX.

**LEGEND**

- |        |                      |
|--------|----------------------|
| ○      | KEYNOTE              |
| —      | GRIDLINE             |
| PJ     | PANEL JOINT          |
| ⊕ COL  | CENTERLINE OF COLUMN |
| O.S.F. | OUTSIDE FACE         |
| ▼      | DOCK-HIGH O.H. DOOR  |
| ▽      | DRIVE-IN O.H. DOOR   |
| ○DS    | DOWN SPOUT           |

**GENERAL NOTES**

- VERIFY AND CONFIRM ALL DIMENSIONS AND CONDITIONS. NOTIFY ARCHITECT OF ANY DISCREPANCIES PRIOR TO THE START OF CONSTRUCTION.
- SEE STRUCTURAL PANEL ELEVATIONS FOR PANEL THICKNESS.
- SEE STRUCTURAL DRAWINGS FOR FRAMING INFORMATION.
- SEE SITE PLAN FOR TRUCK APRON LOCATION AND DIMENSIONS.
- OPENING DIMENSIONS ARE ROUGH OPENING DIMENSIONS U.O.N.